

Executive Director's Report

Walter Allen, Jr.



At this time of the year people seem to be their most generous and compassionate. It's a good thing too because this is the time of year when the greatest need occurs, and this year, even more than most. As the economy continues to drag and recovery happens slowly, those among us who were the most vulnerable will continue to suffer more than the rest of us.

Whether the result of job loss, injury or health issues, or just plain old bad luck, the reasons for families in trouble vary. From

my point of view the reasons are not important, only the victims matter and those victims are all too often the children. As we approach the Holiday season it is the children I think of most when I consider the real damage done by the times.

I grew up in a working class family where all too often my parents had to choose between paying the rent and buying some necessities for the children. Often times the new shoes would have to wait in order to have enough money to buy the food needed to feed everyone. Despite those difficult times my parents managed to conceal our plight from us kids and so we never knew

Continued on page 3

President's Report

Marianne Giordano



Time for Reflection:

The Holidays usually offer time for reflection, a look back if you will. This reflection helps us to recall the things we have and causes us to be grateful. Often when we think back to earlier times the view is determined by our age. If we are in our twenties, times without computers are a reach; fifties, maybe black and white TV comes to mind. I would like us all to think back a little further, to a time before any of us was working every day.

Continued on page 3

United Way: Moving Families Out Of Poverty

Ten years ago, United Way of Greater Los Angeles released the first study of its kind called The Tale of Two Cities: Promise and Peril that showed there are really two sides to Los Angeles. We are home to thousands of millionaires, yet more people live on the streets in L.A. than any other city in the nation. We are home to world-class universities, yet only



60% of our students graduate on time. We have the 24th largest economy in the world, yet one-third of our full-time workers earn less than \$25,000 per year.

What is even more troubling is the disparity gaps in education, income and health are widening – even before the economic downturn started. Yet, even in the face of these alarming facts, we at United Way remain optimistic. We believe with crisis comes opportunity. It represents an opportunity for new solu-

Continued on page 4

Vice-President's Report

By Cathy Young



Slogans like "Together We Are Strong" and "United We Stand" and "Si Se Puede"/"Yes We Can", are familiar to us all. As Americans, as voters, as citizens we heard these phrases quite a bit in the past year or so. But as Union members we not only hear and use these phrases, we live them. Our success over the years is the result of working together, supporting each

other, and yes, being stronger together. At Local 30, we believe in these principles and we live them everyday.

As we look around and we see people struggling to get by, people used and abused by a system that takes more than it gives it is difficult not to realize that we cannot do it on our own. It is only through working together and for our common good that we will all do better. At Local 30 we are fortunate to have a strong Union to support us and to help our families, to protect us in our workplaces, and to provide services and benefits that enable us to live good lives and provide for our families.

Our Union supports the higher education of our children and provides scholarships to help with the high costs associated with college. Our Union provides us with leisure time benefits and discounts which amount to great savings to our families. Our Union's Charity Fund provides assistance to those of our members in the greatest need, and supports community efforts to provide help there as well. Our Union supports, and in fact celebrates the diversity of our membership through involvement in many organizations whose mission it is to advance people in all walks of life, fairly

Continued on page 2

Need An Ergo Eval?

By: Lolita Babaran

As the Labor Co-Chair for Safety Observations, I have had several opportunities to speak with many Local 30 members during my safety observation rounds. I truly enjoy talking with our members, because it not only allows me to get to know them better but it also allows me to get their perspective on Workplace Safety issues.

One of the issues that surfaces time and time again is the misconception of how a member receives an Ergonomic Evaluation. Many members believed the only way an ergo evaluation can be done is through the Safety Observation process. However, what they didn't know is that they, themselves, can request an ergo evaluation. Here are the steps that you can take:

First, always contact your managers, so that they can submit a request on your behalf. Secondly, if you are still in need of an ergo evaluation, you may contact Stephen Martel, Ergonomic Workplace Manager, for Workplace Safety, at (619) 516-7201. Finally, if you have any further questions, you can always contact your Business Agent at Local 30.

Remember, Safety is as easy as ABC – Always Be Careful!

Vice President's Report

continued from page 1

and equally. In short, our Union is doing all that it can to make life better for us in our workplaces, our communities, and in the world we live in.

So this Holiday season as you celebrate according to your customs, let's be grateful for all that we have, and all that we have built together. Let's celebrate our diversity and our strength together. Let's remember those of our leaders who fight for us every-day and those who do the hard work of protecting us and our rights. And let's commit to make 2010 an even better year by being more involved and more successful.

'Our Union' is us, all of us. Together, we all win. Si Se Puede/Yes We Can, and together, Yes We Will.

Best wishes to you all.

Recipients Of The 2009 Local 30 Scholarships are...



*Recipient - Andrea Lynn Kirst
Sponsor: Aleah Kirst, works for Kaiser Permanente in Bostonia*



*Recipient – Ashley N. Bradford
Sponsor: Tanya Bradford, works for Kaiser Permanente in Rancho Bernardo.*



*Recipient – Andy Miller
Sponsor: Charlene Miller, works for Kaiser Permanente, Clairemont Data Center.*



*Recipient – Christina M. Meeker
Sponsor: Elizabeth Meeker, works for SEMCO*

**Local 30
Congratulates all
the recipients for
their scholastic
achievement!**



*Recipient – Taryn S. Torres
Sponsor: Trisha Jackson, works for Kaiser Permanente Primary Care Department, Carlsbad.*



*Recipient – Patricia A. Fierro,
works for Kaiser Permanente Primary Care Department, Carlsbad.*

President's Report

continued from page 1

Imagine a time when workers toiled to support their families at jobs that most of us would never agree to do, and under conditions that we would never accept. Jobs that were dangerous, jobs that had no days off, jobs that did not pay workers when they were sick, or even when they were injured at work. Imagine working 50 or 60 hours in one week and not receiving overtime or in some cases no extra pay at all for those hours. Well, that was what life was really like back in the days when the miners in Pennsylvania and West Virginia fought and died for these basic human rights.

When we look back at the history of the labor movement it shows us that without struggle, progress is unlikely when it comes to such enormous issues and entrenched ways. It is in large part because of the miners struggle for social and economic equality that unionized workers today enjoy many of the benefits we have.

When we look at what is going on in our country today we need to all be very concerned. There are growing disparities in wealth and health care in this country. We no longer feel secure in our future. Unemployment continues to rise, our pension plans have lost much of their value, and our school systems are deteriorating. Our country's infrastructure has been weakened and millions of people in the middle class have been dramatically affected by the economic crisis. There has been a shocking role back of the 'American Dream'.

Compared to the days of the Pennsylvania miners our country is very different in terms of how we deal with crisis. President Obama

Executive Director's Report

continued from page 1

that we had less than others around us. We were never caused to worry about our survival, our home, our family because our parents managed to find ways to provide enough to get us through. A tribute to them certainly, and to so many other parents who were doing the same for their families.

These times are even more difficult than those of my youth. Parents today do not have the option of taking on yet another job, or working more hours to make up the money needed. There is little chance that their plight can be hidden from their kids. And the strain these factors place on the family today is greater than ever. While we know that

continues to work on programs that will help working families through these tough times. He has supported the "Employee Free Choice Act" and the Unions. He believes that health care is not for just some, but is a basic human right. This administration has been working to reverse some of the anti worker policies implemented over the past eight years. It is very important for Americans to respect the sacrifices of those who fought and died in the history of the labor movement for the things we now take for granted. The legacy of their struggles in the fight for social and economic justice must not be forgotten.

The labor movement and the civil rights movement have been one in the same. Only by unifying ourselves around a common vision, can workers gain the dignity they deserve. This has been the collective root of the labor movement, remembering where we started and where we are today in the fight for social and economic justice for all.

So as many of us give thanks for all that we have this Holiday Season, take the time to thank those who came before us, our great grandparents, grandparents, mothers and fathers for making the way for us all. I hope that you all have happy, healthy, and safe Holidays. Stay Well.

New Trustee Joins Local 30 Board



Local 30 member and long time activist Catherine Engler received the oath of office beginning her term as the recently elected Trustee for our great Union. Cathy has been employed at Kaiser Permanente as a Licensed Vocational Nurse (LVN) since 1987, and has served Local 30 as steward, senior steward, LMP trainer, and now as a facilitator for the San Diego area. Cathy has also served on various committees and work groups within the Union including the Awards and Recognition Committee and the Events Committee.

Cathy joins her fellow officers on the Union's Executive Board and looks forward to this new role in support of her Union.

A Lesson From, Geese? By, Erica DeWar

As each goose flaps its wings, it creates an "uplift" for the bird following. By flying in a "V" formation, the whole flock adds 71% greater flying range than if each bird flew alone.

The lesson from the geese is quite simple: People who share a common direction and sense of community can get where they are going quicker and easier because they are traveling on the thrust of one another.

Sometimes the most obvious truth is just right there in front of us all along.

things will get better and the economy will bounce back, these families still need to get through today, tomorrow, the next day, and the Holidays.

I don't know the solution to the economic problems we face and I don't know how much longer it will take for the recovery to move us out of this mess. I do know however that the Holiday season is upon us and I do know that all children deserve a good meal and something to celebrate with. No matter the religion or the beliefs of those kids, they all deserve to know that the people around them care enough to help. Perhaps that will be the life's lesson they

learn from all of this: charity.

So this Holiday Season won't you join me in making some small contribution to relieve the suffering around us? The donation of a toy to the Local 30 Toy Drive, or food to the local food bank, or some change dropped in the Salvation Army kettle, or donations of things from home to the Goodwill Industries, or whatever else you can think of, every little bit really does help.

If everyone who is able make some small effort to help those with less right now, the recovery will certainly seem a little closer. Happy Holidays.

United Way
continued from page 1

tions to come forward and for people to come together in new ways.

In the face of these widening gaps and rising levels of poverty, we knew that for us to have real impact in the community, we needed to focus on three interconnected issues that represent the biggest levers in permanently moving children and their families out of poverty.

We believe that all families should have access to affordable housing and health care.

We believe all kids should have a quality education and graduate from high school prepared for college and the workforce.

We believe that all working adults should have the tools they need to be financially stable and provide for their families' future.

As we face tough economic challenges, we know, now more than ever, it's important to provide the foundations necessary to build a brighter future for families and individuals. We are also pleased to announce the new Mullin-Miller Match Fund where we will match, dollar for dollar, any new gift you give to our Creating Pathways Out of Poverty Plan, or any increase to your previous gift to the Poverty Plan. Your support is helping families break the cycle of poverty across Greater Los Angeles. Working together, we're helping people thrive.

Annie Watson Appointed Board Member For Los Angeles Region

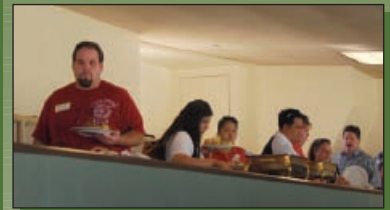


Long time Local 30 member and Chief Steward at the City of Hope Annie Watson has been appointed to fill a vacant Executive Board seat for the Los Angeles region. Annie formally held a Trustee seat on the Board. Among her many other responsibilities with the Union, Annie serves on the Events Committee and chairs the annual 'Day At The Races' event each year. She is also a delegate to the Los Angeles Labor Council and does extensive work with various cancer projects, many originating from her place of employment, the City of Hope.



Day at the Races

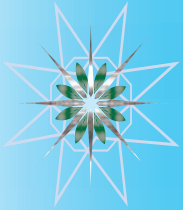
Once again Local 30 members and their families enjoyed great weather, great food, and lots of fun at the races at Santa Anita. Rumor has it there were some winners too. "We always have a lot of fun together at this event," reported Annie Watson, Chair of the event. "Everything went well, everyone had a great day. And some of our members went home with more money than they came with which is a great result."



HAPPY HOLIDAYS

HAPPY HOLIDAYS

HAPPY HOLIDAYS



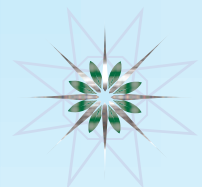
Dear Local 30 Members,

Wishing you the joy of the season...

May the feeling of solidarity warm your heart and the hearts of your loved ones throughout the Holiday and coming year.

The Officers and Staff

OPEIU, Local 30



Staff of Local 30

Walter Allen, Jr.	Executive Director/CFO
MaryEllen Farrell	Director of Field Services
Annette Baxter	Sr. Business Agent
Lolita Babaran	Business Agent
Mark Bailey	Business Agent
Maria Perez	Executive Assistant
Charlotte Kilgore	Office Manager/Bookkeeper
Maria Serrano	Administrative Assistant
Kim Tyler	Administrative Assistant

Office & Professional Employees International Union SAN DIEGO OFFICE

4560 Alvarado Canyon Rd., Suite 2H
San Diego, CA 92120

Telephone: (619) 640-4840 • Toll Free: (866) 673-4830

Fax: (619) 640-4830

LOS ANGELES OFFICE

705 West Arrow Highway, Second Floor
Claremont, CA 91711-9000

Telephone: (909) 624-0149 • Toll Free: (888) 390-6442

Fax: (909) 624-0549

ARIZONA OFFICE

5818 N. 7th Street, Suite 113
Phoenix, AZ 85014

Telephone: (602) 266-1200 • Fax: (602) 266-1205

E-Mail: opeiu_local30@sbcglobal.net

Web Site: www.opeiulocal30.org

OFFICE & PROFESSIONAL EMPLOYEES
INTERNATIONAL UNION
Local Union No. 30
705 West Arrow Highway, 2nd Floor
Claremont, CA 91711-9000



NON PROFIT
U.S. Postage
PAID
Permit No. 969
San Diego, CA

*Remember to send in your nomination for
the **Evening With The Stars Award Banquet**
Deadline is 1/29/2010*

General Membership Meetings

Dear Local 30 Member: Please be advised that the next regular General Membership Meetings are scheduled as follows:

ARIZONA

Monday, January 25, 2010 • 6 p.m.
OPEIU, Local 30
5818 N. 7th St., Suite 113 Phoenix AZ 85014

LOS ANGELES

Wednesday, January 27, 2010 • 6 p.m.
City of Hope - Conference Room C
1500 E. Durate Rd. Duarte, CA 91010

SAN DIEGO

Thursday, January 28, 2010 • 6 p.m.
OPEIU, Local 30
4560 Alvarado Canyon Rd., Suite 2H
San Diego, CA 92120

All members of Local 30 are encouraged to attend these meetings to obtain current information on the business of the Union. Union officials and staff will be available to answer questions and provide reports, updates and other information regarding Local 30.

I hope to see you there. In unity,

Walter Allen, Jr.
Executive Director/CFO

Attention All Local 30 Stewards and Members!
Please join us as we participate in the

30th Annual Martin Luther King, Jr. Parade
Saturday, January 16, 2010
10 a.m. to 2 p.m.
San Diego, CA

*Participants will be walking along the parade route
holding signs and a banner, which will be provided by Local 30.*



Parade Route

Staging Area at Tailgate Park
(13th Imperial Avenue)
Parade Route will be
North on Park Blvd. to "J" Street
West on "J" Street to 7th Avenue
South on 7th Avenue back to Tailgate Park

SIGN UP TODAY by contacting the Local 30 Office:

Tel: (619) 640-4840

Email: opeiu_local30@sbcglobal.net

Thank you for your support.